



# TOTAL DENTAL SOLUTION

New generation dental diode laser - Built on years of experience

# NEW Dental Diode Laser Systems

NEUDLS01 launch its second generation dental laser NEUDLS01 for the dental market in May, 2015, the max output power is 7w, 810nm or 10w, 940 nm/ 980nm, there is a big color touch screen, wireless foot switch and customizable pre-setting protocols. As it is becoming more competitive in the dental laser market, our new NEUDLS01 laser system will offer our partners, dentists and hygienists an effective but affordable unit for their practice.



**7 inch touch screen**



**Wireless foot switch**

**10**  
**Watts**

**Max output power 10w**

## Clinical Applications

### A. Periodontal Therapy

Gingivitis-2W

Periodontitis – Pulse, 500/500ms, 1-2.5W

Operculectomy – CW, 3-3.5W

Frenectomy – CW, 2-2.5W

Gingivectomy – CW, 1.5-2W

### B. Endodontics

Root canal sterilization- CW, 1W

Periapical abscess- CW 1.2-1.5W

Caries-Pulse 1.2W, 500/500ms

Desensitization- Pulse, 30/30ms, 3W

Laser analgesia,-CW, 2W

### C. Oral surgery

Soft tissue excision-2W

Ablation-2.5W

Implant exposure-CW, 2-3W

Peri-implantitis-2W

Apthae and herpes- 1.5W

### D. Aesthetic procedures

Bleaching – CW, 1.5-3W

Depigmentation – CW, 2-3.5W

Gummy smile correction -2W

Aphthae and herpes, CW, 1.5-2W

Crown lengthening, CW, 1.5W

### E. Biostimulation

Teeth desensitization –Pulse, 30/30ms, 0.5-5W

Post extraction-0.8W

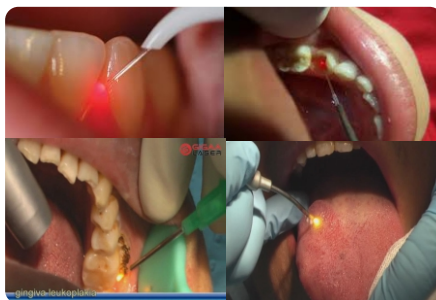
TMJ -0.8W

Haemostats-CW, 0.8-1.5W

Leukoplakia-2W

## Soft Tissue Surgery

The most precise control of tissue cutting can use for different procedures and tissue biotypes. It cuts soft tissue clean, with more hemostasis and supreme patient comfort.



## Tooth Whitening

An ideal teeth-whitening solution for progressive offices which it's wants to expand their cosmetic treatment menu. Bleaching gel applied act as an isolator will have better performance.

## Pain Therapy

Using Deep Tissue Therapy Handpiece can ease discomforts such as Anti-Inflammation, Anti-Pain, Accelerated Tissue Repair and Cell Growth.

